



Toprow | Wreningham | NR16 1AR
£525,000

twgaze

Toprow | Wreningham | NR16 1AR £525,000

A detached four bedroom character home with large garden ideal for a growing family looking for a countryside living.

- Four Bedroom
- Large garden
- Lounge with wood burner
- County style kitchen with porcelain sink
- Bathroom with bath and separate shower room
- Detached family home
- Open plan family room
- Snug
- Utility room with ground floor W.C
- Semi Rural hamlet location

Full Description

GUIDE PRICE £525,000- £550,000

Location

Toprow is a small hamlet located close to the popular village of Wreningham near to the historic market town of Wymondham and a few miles south of Norwich. The property can be found within easy reach of Wymondham High and Wymondham college, which is a state boarding School. Wymondham offers an excellent range of amenities and supermarkets including a Waitrose. There is a train station with good links to Cambridge, London and Norwich. Wymondham also provides direct access on A11, again linking routes into Norwich and out of the county. The historic and





cultural City of Norwich is renowned for its arts and theatre, with many trendy bars and cafe's nearby servicing a bustling student City, with the UEA on the outskirts. Norwich boasts very good shopping and nightlife as you may expect. In terms of transport, there are numerous train and bus services, road links and an International airport flying to various European destinations.

The Property

This beautifully presented family home is brimming with character and charm, offering a perfect blend of modern living and traditional features. The welcoming entrance hall leads to a cozy snug with a knock through wood burner shared with the lounge, the open plan lounge has a stunning herringbone reclaimed floor. The light-filled family room provides an ideal space for dining, with bi-fold doors that open seamlessly into the garden. The open-plan kitchen boasts a central island breakfast bar, built-in appliances, and a stylish porcelain sink, while a convenient utility/boot room and ground floor WC offer added practicality. Upstairs, a winding staircase leads to a landing with access to a spacious main bedroom featuring dual aspect windows with views over the garden and a recently refurbished en suite shower room. Three further well-sized bedrooms and a luxurious family bathroom with separate bath and shower complete this stunning home.

The Outside

This charming property features a welcoming front path leading to the entrance, with a side shingle driveway providing off-road parking for a vehicle and access to the rear. The stunning rear garden offers a peaceful oasis with mature trees, a lush lawn, and a small stream at the end, creating a serene outdoor retreat. There is also a designated, partitioned area perfect for keeping chickens, along with a bountiful allotment-style garden ideal for those looking to embrace a self-sufficient lifestyle. This property offers a wonderful blend of practicality and natural beauty, making it an ideal choice for anyone seeking a rural haven.

Services Mains electricity, mains water, mains drains and oil central heating

EPC:

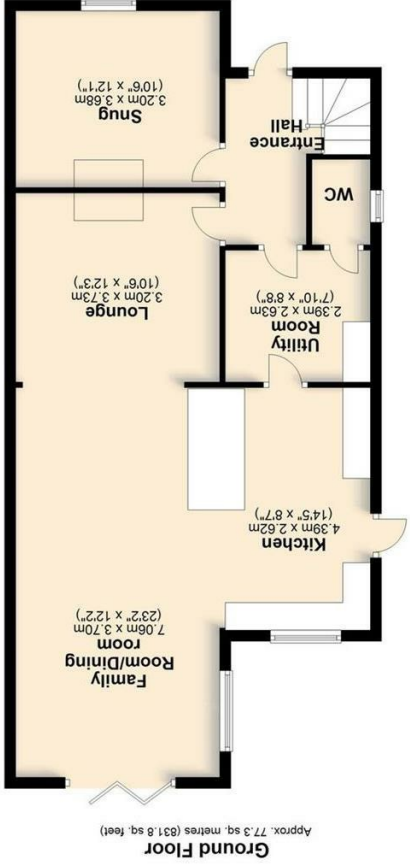
Viewing Strictly by appointment with TW Gaze.

Freehold

Council Tax Band E

33 Market Street
 Wymondham
 Norfolk
 NR18 0AJ
 01953 423 188
 info@twgaze.co.uk

Energy Efficiency Rating	
EU Directive 2002/91/EC	
Very energy efficient - lower running costs	A (91-93)
Energy efficient	B (81-91)
Decent energy efficiency	C (69-81)
Below average energy efficiency	D (55-69)
Low energy efficiency	E (39-55)
Poor energy efficiency	F (21-39)
Very poor energy efficiency - higher running costs	G (1-21)
Current	
Target	



Total area: approx. 142.9 sq. metres (1538.3 sq. feet)